



# HERITAGE

PUBLIC INFORMATION  
SESSION 2022

# WELCOME

## Agenda

- Introductions and Housekeeping
- What is heritage?
- Examples of heritage items in our area
- Heritage Conservation Areas
- Why is it important to conserve our heritage?
- Heritage Management
- Exempt Development
- Heritage Advisory Service
- When is a Development Application required?
- Requirements for Development Applications
- Development Application Process
- Heritage Building Grants

Q&A



## Acknowledgement of Country

Georges River Council acknowledges the Bidjigal people of the Eora Nation, who are the traditional inhabitants and custodians of all land, water and sky in the Georges River area. We pay our respects to their Elders past, present and emerging.



## What is heritage?

Heritage consists of places and items that we want to keep and pass on to future generations.

Heritage items and heritage conservation areas have **heritage significance** which means they demonstrate historical, scientific, cultural, social, archaeological, architectural, natural or aesthetic values.

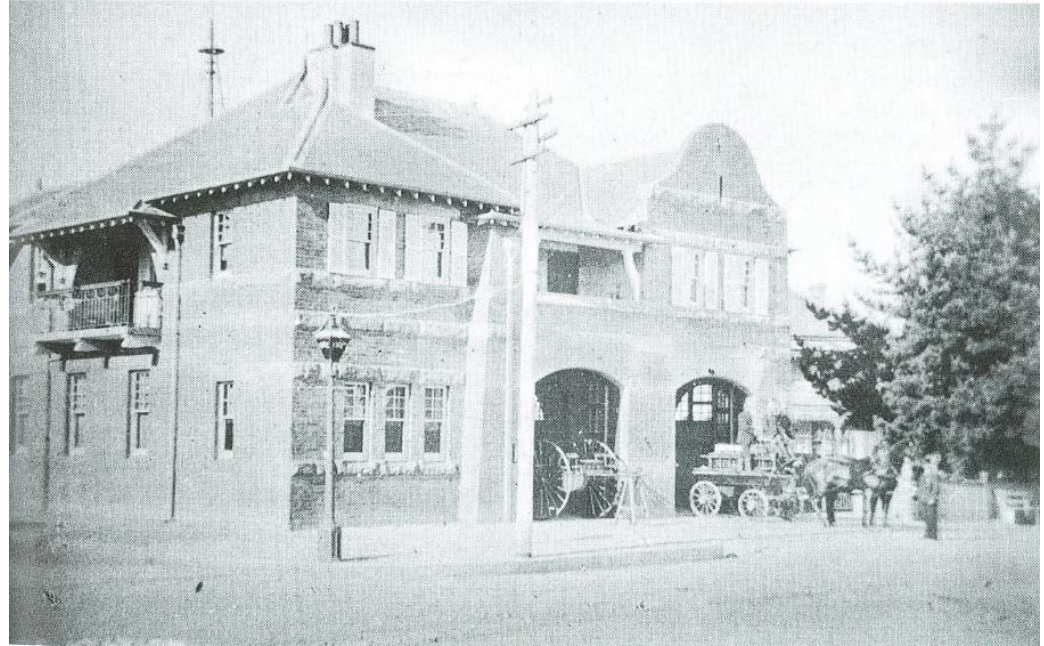


## What is heritage?

A **heritage item** means a building, work, place, relic, tree, object or archaeological site that is listed in Council's LEP and has heritage significance.

A **heritage conservation area** means an area of land identified in Council's LEP and includes a building, work, place, relic, tree, object or archaeological site situated on or within the land and has heritage significance.

Georges River Council has **317** heritage items and **3** heritage conservation areas that are listed in Council's Local Environmental Plan (LEP).



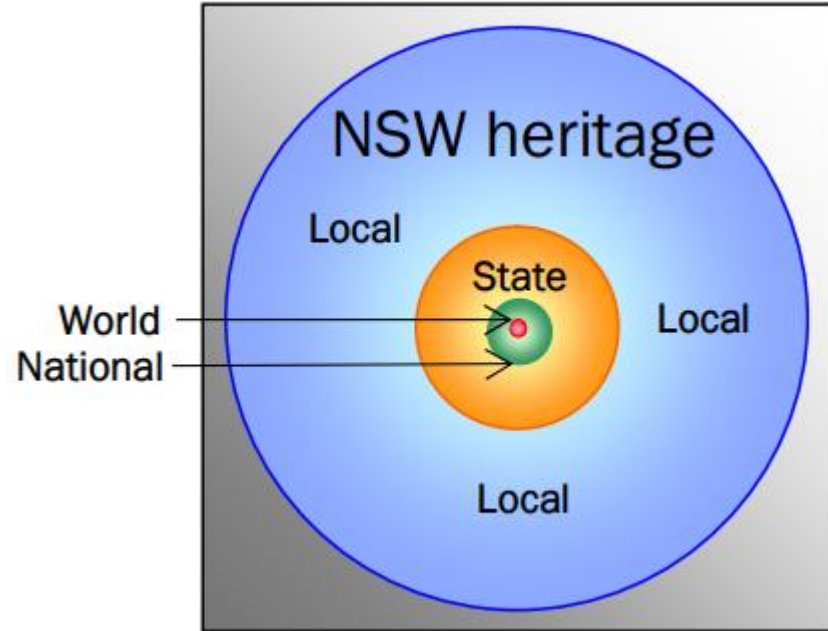
*Photo of Kogarah Fire Station on Gray Street in 1915*

## Levels of heritage listing

There are four levels of heritage significance:

- Local
- State
- National
- World

The majority of heritage listings are at the local level.



*Extract from Levels of Heritage Significance, NSW Heritage Office, 2008*

# Significance assessment criteria

## Criterion (a)

An item is important in the course, or pattern, of NSW's cultural or natural history (or the cultural or natural history of the local area);

## Criterion (b)

An item has strong or special association with the life or works of a person, or group of persons, of importance in NSW's cultural or natural history (or the cultural or natural history of the local area);

## Criterion (c)

An item is important in demonstrating aesthetic characteristics and/or a high degree of creative or technical achievement in NSW (or the local area);

## Criterion (d)

An item has strong or special association with a particular community or cultural group in NSW (or the local area) for social, cultural or spiritual reasons;

## Criterion (e)

An item has potential to yield information that will contribute to an understanding of NSW's cultural or natural history (or the cultural or natural history of the local area);

## Criterion (f)

An item possesses uncommon, rare or endangered aspects of NSW's cultural or natural history (or the cultural or natural history of the local area);

## Criterion (g)

An item is important in demonstrating the principal characteristics of a class of NSW's

- cultural or natural places; or
- cultural or natural environments.

(or a class of the local area's

- cultural or natural places; or
- cultural or natural environments.)

*Extract from Assessing heritage significance, NSW Heritage Manual 2001*

## Example of heritage items in our area

### **8 Woronora Parade, Oatley**

'Oxford' is a good example of a Federation style brick cottage contributory to the streetscape as it features characteristic elements of Federation style architecture including:

- Street-facing gable.
- Fretted timber valance.
- Stained glass windows.
- Corrugated iron roof.





## Example of heritage items in our area

**6-14 Gray Street and 170 Railway Parade, Kogarah**  
'The Terraces' are locally significant as a rare group of Edwardian two storey terraces. They represent consolidation of the Kogarah Town Centre with the establishment of the railway.



# Heritage Conservation Areas

Georges River Council has 3 Heritage Conservation Areas:





- Penshurst Heritage Conservation Area
- O'Briens Estate Heritage Conservation Area
- Kogarah South Heritage Conservation Area



# Penshurst Heritage Conservation Area



### Legend

-  Contributory Item
-  Neutral Item
-  Intrusive Item
-  HCA Boundary



# O'Briens Estate Heritage Conservation Area



# Kogarah South Heritage Conservation Area



## HCA Design Guidelines

The Georges River Development Control Plan (DCP) Appendix 2 and 3 contains detailed design guidelines for development in HCAs.

The guidelines set the tone for new development and are applied consistently across the HCA.

Any proposed works within the HCA must address and respond to the requirements of the HCA guidelines.

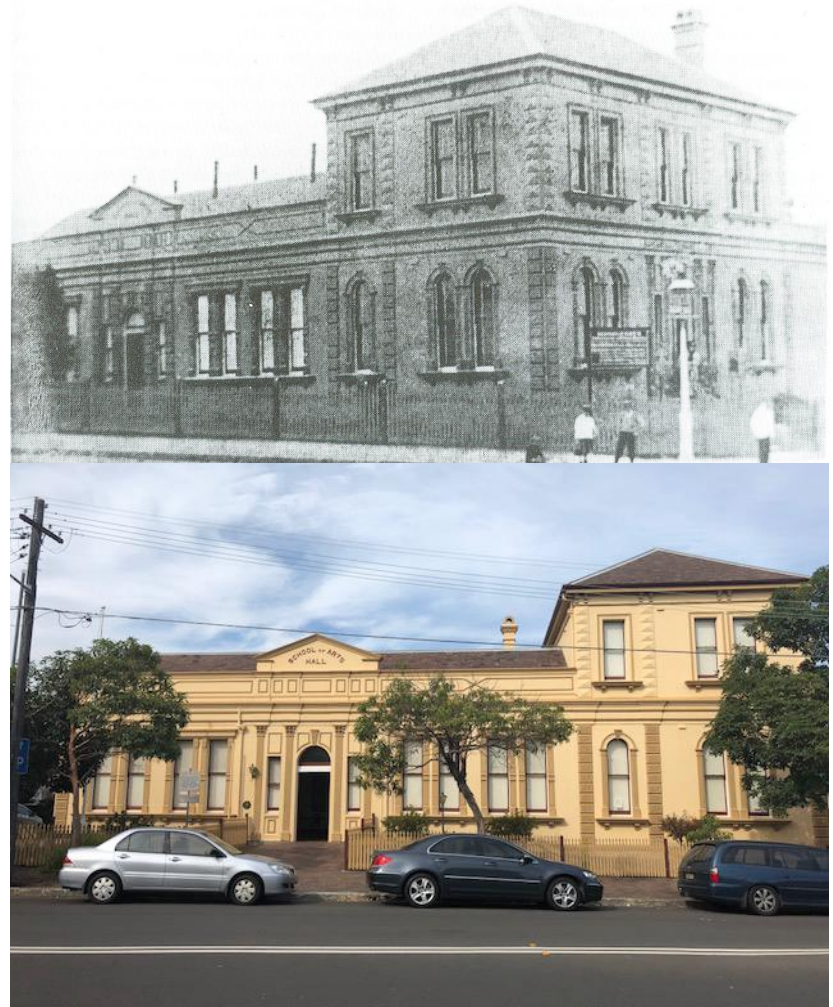


**Appendices**

## Why is it important to conserve our heritage?

- Builds the history and identity of a suburb and the Georges River area
- Makes a positive contribution to the street or place and enriches the vibrancy of our town centres and suburbs
- Contributes to a 'sense of place' and the longevity and identity of an area
- Provides tangible links to our past so we can contribute to the present environment and to be of value to future generations
- Provides public enjoyment of local heritage within the community

*Photos of Kogarah School of Arts in 1890 and 2018*



# Heritage Management

Georges River Council plays an important role in heritage management by identifying, assessing and managing heritage places and objects in the local area.

Owners of heritage properties also play a role in maintaining the heritage fabric of their property.

Council encourages good and proactive management of heritage items and buildings within the HCAs.

The best way to look after heritage items is to maintain them.

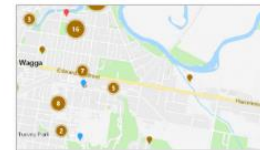
NSW Government | Heritage NSW

Search

Home | What we do | About | Protect | Search | Applications | Grants | Celebrate

**Welcome to Heritage NSW.**  
Explore the Aboriginal, environmental, built and archaeological heritage of NSW and learn how to protect, celebrate and conserve it.

**Do you have treasured items that were damaged in the floods?**  
The Australian Institute for the Conservation of Cultural Materials has compiled an invaluable resource with instructions for dealing with water-damaged materials such as books, objects and photos. More information [↗](#)



### Heritage Management System is live

Discover our digital system for lodging Heritage Act applications and searching the NSW State Heritage Inventory.

### Mortars: materials, mixes and methods

A guide to repointing mortar joints in older buildings



### Mortars: materials, mixes and methods

Check out this newly-published guide to repointing mortar joints in older buildings



### Aboriginal Heritage Information Management System

Search the AHIMS database of over 100,000 recorded sites and over 14,000 archaeological and cultural



## Exempt from Development Consent

Minor work or maintenance work may be exempt development. Type of work includes:

- Removal of paintwork to reveal original sandstone.
- Repointing of brickwork.
- Restoring original features such as windows.
- External painting in traditional colour schemes.
- Reinstatement of traditional front fencing.

A Heritage Exemption Form must be lodged and approved by Council.



# Heritage Advisory Service

## Contact Council

- Talk to the duty planner

## Prepare preliminary plans and/or documentation

- Depends on the type of development

## Heritage advisor to provide comments

- Site visit may be undertaken

## Heritage comments to be provided to applicant

- Advice should be incorporated into DA or exemption form

## When is a Development Application required?

A Development Application is required when the work to the heritage property is **not** minor work or maintenance work.

Council's Planning Controls include:

- Georges River LEP 2021
- Hurstville LEP 1994 (only for the Hurstville Museum and Gallery)
- Georges River DCP 2021

### c) New buildings

- All new buildings must provide a pitched and tiled (or possibly slate) roof for that part of the building that is visible from the street. Rear elements may adapt a different form or materials as long as the other sections of these Guidelines are met.
- A range of roof forms and pitch is displayed throughout the Conservation Area. Roof forms should be drawn from surrounding Contributory dwellings.

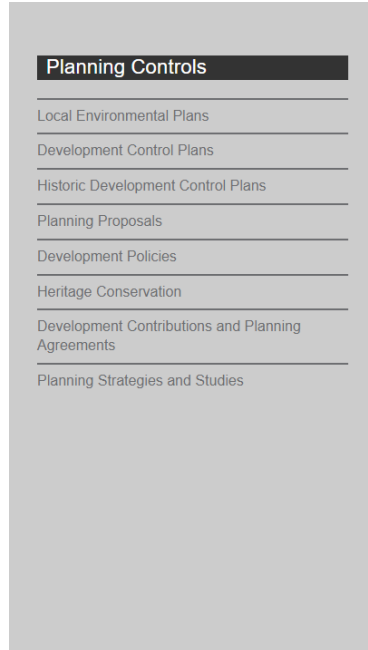


# Requirements for Development Applications

Development applications for heritage significant properties must be accompanied by a:

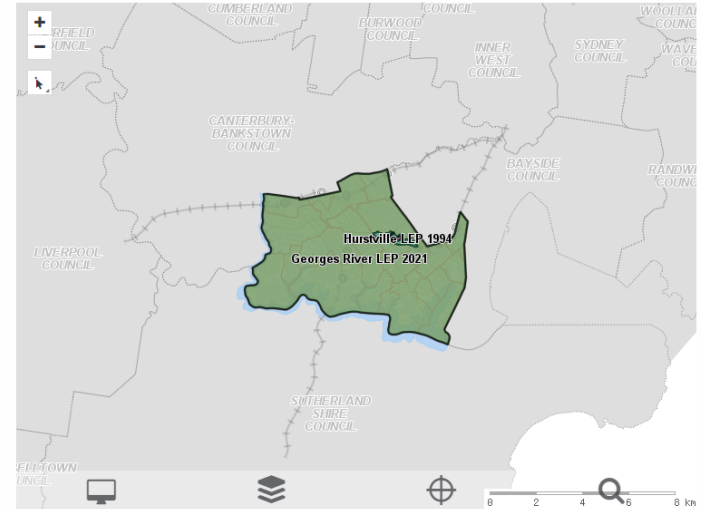
- Statement of Environmental Effects.
- Heritage Impact Statement.
- Scaled plans.
- Survey.
- Development Application Form.

Council's website provides an Application Guide.



## PLANNING CONTROLS

Our [interactive map](#) shows where our [Local Environmental Plans](#), [Development Control Plans](#) and [Development Contributions](#) apply to in the Georges River local government area. Our [user guide](#) will help you to search for your property.



*Georges River Council website*

## Development Application Process

**Lodgement of  
DA**



**DA referred  
to Heritage  
Advisor**



**Heritage Advisor  
and Heritage  
Liaison Officer  
review DA**



**Heritage Advisor  
visits site and  
assesses  
proposal against  
Planning  
Instruments  
(LEP, DCP and  
SHI sheet)**



**Heritage  
Advisor to  
provide  
comments to  
Heritage Liaison  
Officer to inform  
assessment of  
the DA**

## Heritage Building Grants

Each year, the Heritage Building Grants Program provides financial support to help conserve heritage listed buildings.

Owners of heritage listed properties are eligible for financial assistance (up to 50% of the project value up to a maximum of \$10,000) for restoration or conservation work on their property

24 applications were received for grant funding in 2021/22, with 18 being successful

Successful applicants have been notified of the outcome requesting to accept the grant offer prior to 30 June 2022 and to have the work completed and a receipt for the work submitted to Council prior to 1 December 2022.

More information is available on Council's heritage webpage.



# Q&A

Note: For any specific questions relating to individual properties, please email [mail@georgesriver.nsw.gov.au](mailto:mail@georgesriver.nsw.gov.au) or phone (02) 9330 6400



**Thank you**

---