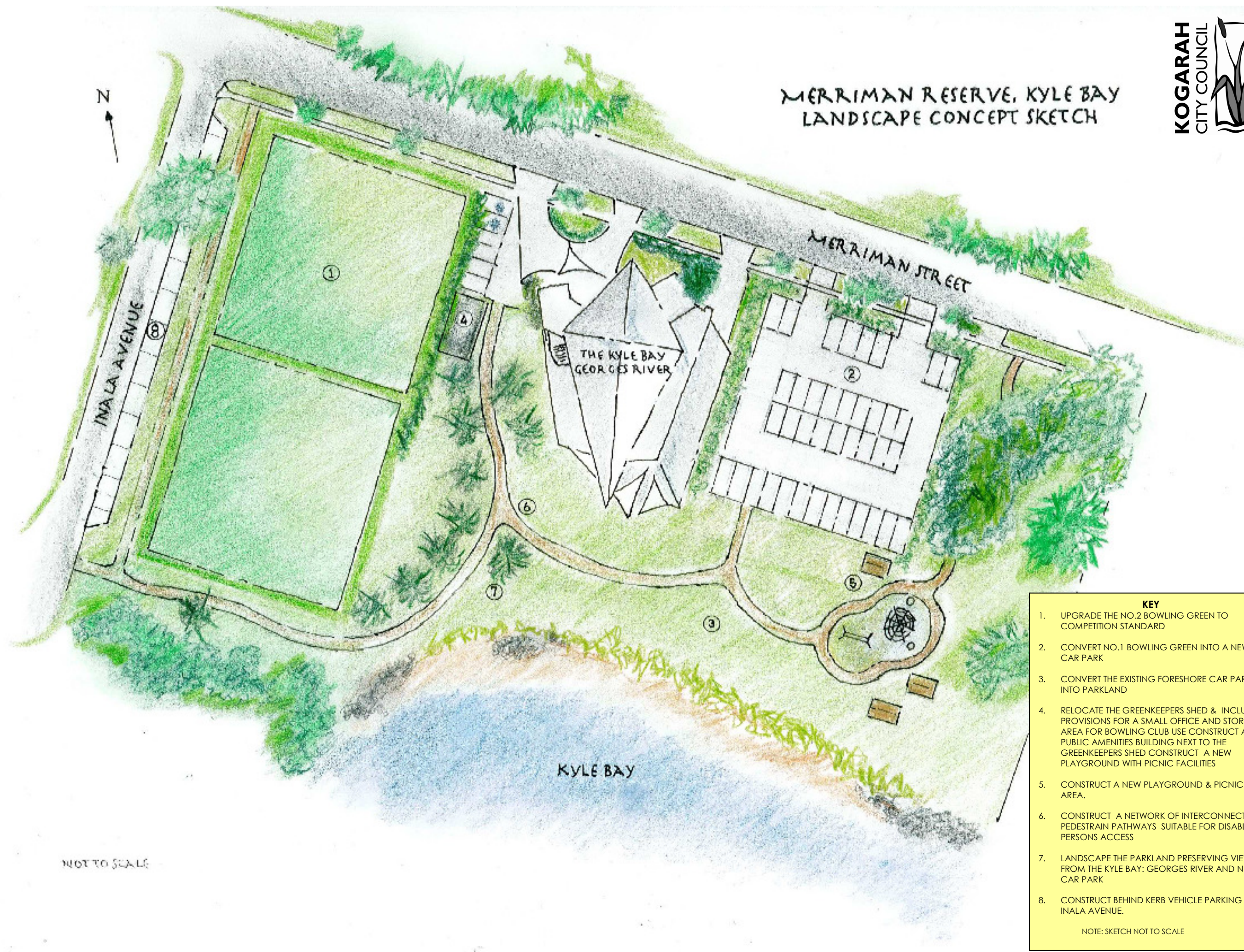


MERRIMAN RESERVE, KYLE BAY
LANDSCAPE CONCEPT SKETCH



NOT TO SCALE

- KEY**
1. UPGRADE THE NO.2 BOWLING GREEN TO COMPETITION STANDARD
 2. CONVERT NO.1 BOWLING GREEN INTO A NEW CAR PARK
 3. CONVERT THE EXISTING FORESHORE CAR PARK INTO PARKLAND
 4. RELOCATE THE GREENKEEPERS SHED & INCLUDE PROVISIONS FOR A SMALL OFFICE AND STORAGE AREA FOR BOWLING CLUB USE CONSTRUCT A PUBLIC AMENITIES BUILDING NEXT TO THE GREENKEEPERS SHED CONSTRUCT A NEW PLAYGROUND WITH PICNIC FACILITIES
 5. CONSTRUCT A NEW PLAYGROUND & PICNIC AREA.
 6. CONSTRUCT A NETWORK OF INTERCONNECTING PEDESTRAIN PATHWAYS SUITABLE FOR DISABLED PERSONS ACCESS
 7. LANDSCAPE THE PARKLAND PRESERVING VIEWS FROM THE KYLE BAY: GEORGES RIVER AND NEW CAR PARK
 8. CONSTRUCT BEHIND KERB VEHICLE PARKING IN INALA AVENUE.
- NOTE: SKETCH NOT TO SCALE